



LOGIC HEAT.

12 15 18 24 30

HIGH EFFICIENCY HEAT BOILERS.

Designed to be installed with the minimum of fuss Logic appliances offer a speedy installation.



LOGIC HEAT

- Fully modulating operation down to 4.8 kW*
- Weather compensation kit option
- Water flow sensor
- Four optional language user instructions**

RELIABLE

- Energy Saving Trust endorsed product
- Flexible warranty
- Boiler frost protection
- Two stage flame sensing for greater reliability
- Latest generation Honeywell gas valve

EASY TO INSTALL

- Compact cupboard fit
- Direct 80mm diameter rear flue option
- Wide range of flueing options
- Low lift weight (23kg)[†]
- Top system connections
- 75mm deep translucent condensate siphon
- Stand-off kit
- Terminal wall plate kit
- Security bracket kit
- Low minimum head requirement
- LPG conversion kit available for 30 kW boilers



Compact



LPG
Conversion Kit**



Frost
Protection



Flue
Variants



NOx
Class 5



Direct Rear
Flue

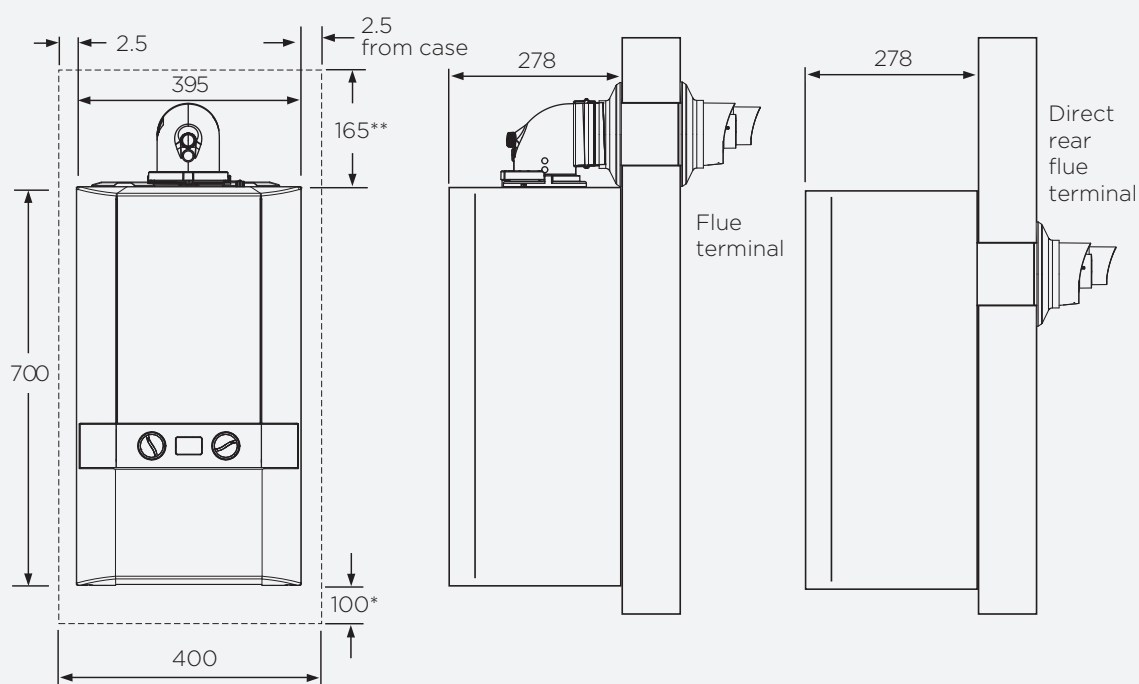


Ideal Boilers
PO Box 103, National Avenue
Kingston upon Hull
East Yorkshire, HU5 4JN

T: 01482 492251
ideal@idealboilers.com
WWW.IDEALBOILERS.COM

* (30 kW only - 6.1 kW). ** Available to download from www.idealboilers.com
** Available with 30 kW model. † Weight with front panel removed.

CLEARANCES & DIMENSIONS.



Note: The minimum front clearance when built-in to a cupboard is 5mm from the cupboard door but 450mm overall clearance with the cupboard door open is required for servicing. *Bottom clearance after installation can be reduced to 5mm. However, 100mm is required for servicing. ** Rear flue option - top clearance 100mm.

FLUE LENGTHS.

	HEAT 12	HEAT 15	HEAT 18	HEAT 24	HEAT 30
Max horizontal	9m				8m
Max vertical	7.5m				
Powered vertical	22m				

Available kits: high level flue outlet kit and direct rear flue kit (55/80).

TECHNICAL SPECIFICATIONS.

	HEAT 12	HEAT 15	HEAT 18	HEAT 24	HEAT 30
Height mm	700				
Width mm	395				
Depth mm	278				
Weight (packaged) kg	28.7				
Max installation weight kg	23.0				
CH output (kW) min/max @ 70°C	4.8 - 12.0	4.8 - 15.0	4.8 - 18.0	4.8 - 24.2	6.1 - 30.3
CH output (kW) min/max @ 40°C	5.1 - 13.0	5.1 - 15.9	5.1 - 19.1	5.1 - 25.6	6.4 - 31.0
DHW output (kW) max	n/a				
DHW flow rate l/min. 35°C rise	n/a				
SEDBUK rating (2005) %	91.2	91.1	91	91	91.1
SEDBUK rating (2009) %	89.4	89.3	89.2	89.5	89.6
NOx classification	CLASS 5				
Adjustable to LPG	No	No	No	No	Yes